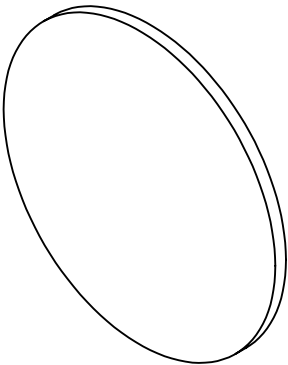
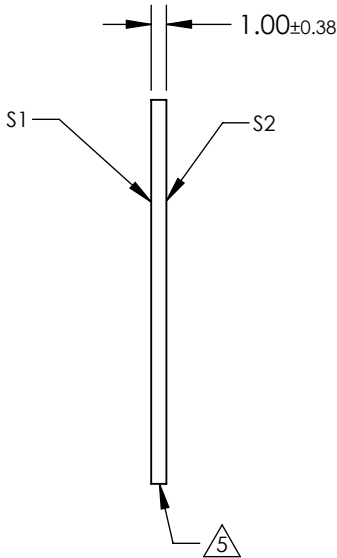
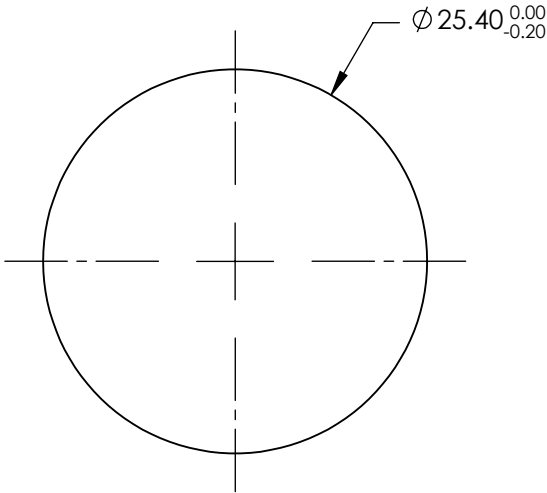


- NOTES:
- 1. SUBSTRATE: Fused Silica (Corning 7980)
  - 2. RoHS COMPLIANT
  - 3. SURFACE S2 TO BE PARALLEL WITH SURFACE S 1 TO WITHIN ACRMINS
  - 4. Coating (Apply Across Clear Aperture):
    - S1 & S2: Rabs <0.25% @ 532nm
    - Rabs <0.25% @ 1064nm
    - Ravg <1.0% @ 500 - 1100nm



5. FINE GROUND SURFACE



**FOR INFORMATION ONLY:  
DO NOT MANUFACTURE  
PARTS TO THIS DRAWING**

SPECIFICATIONS SUBJECT TO CHANGE WITHOUT NOTICE  
DIMENSIONS ARE FOR REFERENCE ONLY

	S1	S2
Shape	Plano	Plano
Surface Accuracy	1λ	1λ
Surface Quality	60-40	60-40
Clear Aperture	22.86	22.86
Bevel	Protected as Needed	Protected as Needed



ALL DIMS IN mm

**Edmund Optics®**

TITLE

25.4mm Dia. 1mm Thick YAGG-BBAR Coated,  
1λ Fused Silica Window

DWG NO

25337

SHEET  
94 OF 101