

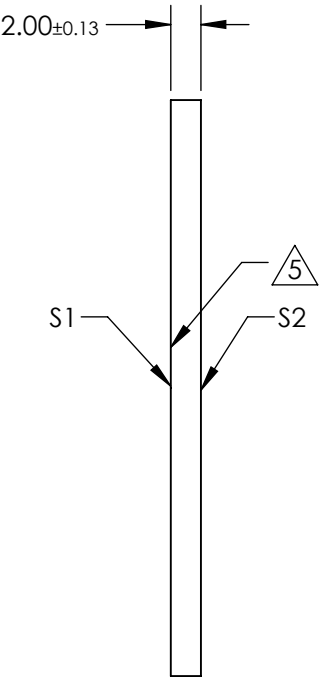
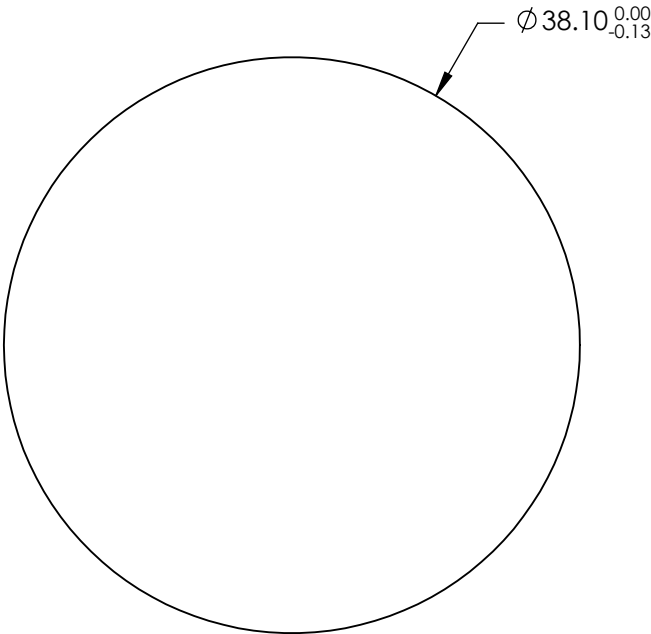
- NOTES:
- 1. SUBSTRATE: Silicon (Si)
 - 2. SURFACE S2 TO BE PARALLEL TO SURFACE S1 TO WITHIN 3 ARCMIN
 - 3. ENVIRONMENTAL REQUIREMENTS:

S1: DLC COATING
ADHESION: PER MIL-C-48497C
ABRASION: SEVERE PER MIL-C-48497C
HUMIDITY: 24 HOURS PER MIL-C-48497C
SALT SOLUBILITY: ≥24 HOURS IMMERSION PER MIL-C-675C
SALT SPRAY: ≥72 HOURS PER MIL-C-675
SOLUBILITY AND CLEANING: PER MIL-C-48497
TEMPERATURE (°F): -80 to +160 PER MIL-C-48497C
WIPER: ≥1,000 WIPE OF SAND/SLURRY PER TS-1888

S2: BBAR COATING
ADHESION: PER MIL-C-48497C
ABRASION: MODERATE PER MIL-C-48497C
HUMIDITY: 24 HOURS PER MIL-C-48497C
SOLUBILITY AND CLEANING: PER MIL-C-48497
TEMPERATURE (°F): -80 to +160 PER MIL-C-48497C

4. REFLECTION PERFORMANCE ACROSS CLEAR APERTURE
S2: R(AVG) ≤0.5% FROM 3.0 - 5.0µm

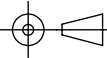
 ARROW POINTS TOWARDS S1 WITH DLC COATING



FOR INFORMATION ONLY:
DO NOT MANUFACTURE
PARTS TO THIS DRAWING

SPECIFICATIONS SUBJECT TO CHANGE WITHOUT NOTICE
DIMENSIONS ARE FOR REFERENCE ONLY

	S1	S2
SHAPE	PLANO	PLANO
SURFACE QUALITY	40-20	40-20
SURFACE FLATNESS	λ/10 @ 10.6µm	λ/10 @ 10.6µm
CLEAR APERTURE	Ø32.38	Ø32.38
BEVEL	PROTECTED AS NEEDED	PROTECTED AS NEEDED

THIRD ANGLE PROJECTION 		Edmund Optics®	
ALL DIMS IN mm		TITLE	38.1mm Dia. x 2mm Thick, 3-5µm AR Coated & DLC Coated, ISP Optics Silicon (Si) Window
DWG NO		24647	SHEET 129 OF 175