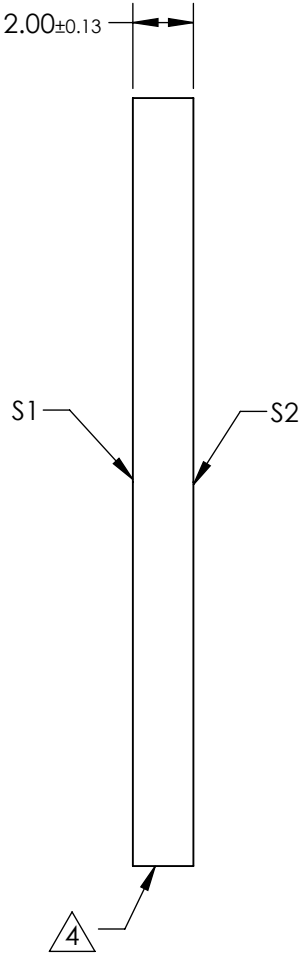
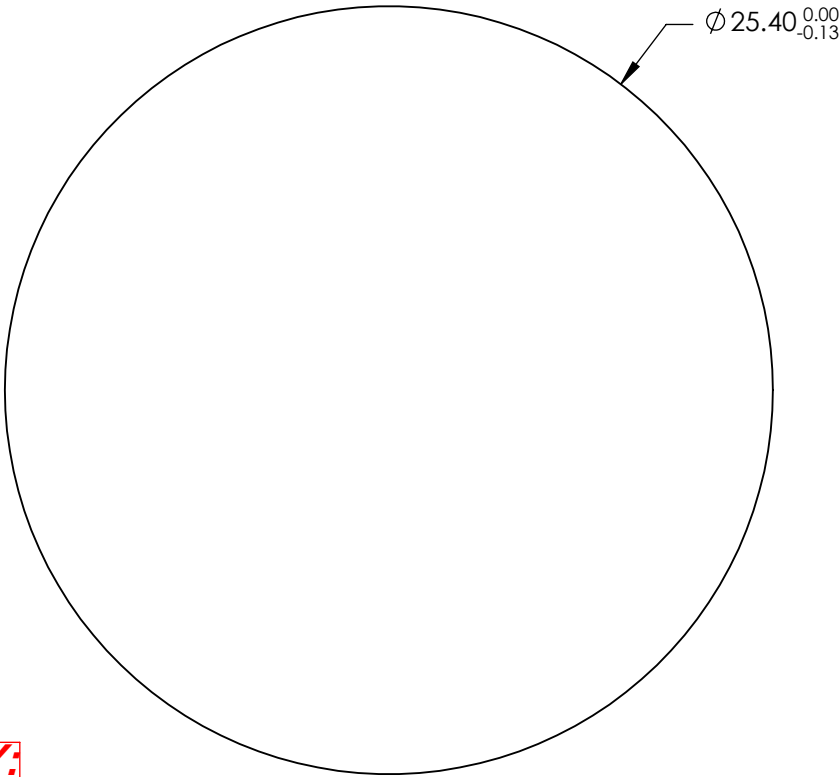


NOTES:

- 1. SUBSTRATE:
Zinc Selenide (ZnSe)
- 2. PARALLELISM:
SURFACE S2 TO BE PARALLEL WITH SURFACE S1 TO <3 ARCMIN
- 3. COATING:
S1 & S2: R(AVG) <0.5% @ 8 - 12µm
R(ABS) <1% @ 8 - 12µm

4. FINE GRIND SURFACE

5. ROHS COMPLIANT



**FOR INFORMATION ONLY:
DO NOT MANUFACTURE
PARTS TO THIS DRAWING**

SPECIFICATIONS SUBJECT TO CHANGE WITHOUT NOTICE
DIMENSIONS ARE FOR REFERENCE ONLY

	S1	S2
SHAPE	PLANO	PLANO
SURFACE QUALITY	60-40	60-40
SURFACE FLATNESS	$\lambda/20$ @ 10.6µm	$\lambda/20$ @ 10.6µm
CLEAR APERTURE	Ø21.59	Ø21.59
BEVEL	PROTECTED AS NEEDED	PROTECTED AS NEEDED



ALL DIMS IN mm

Edmund Optics®

TITLE

25.4mm Dia., 2mm Thick, 8-12µm BBAR
Coated, ISP Optics Zinc Selenide (ZnSe)
Window

DWG NO

24678

SHEET
155 OF 175