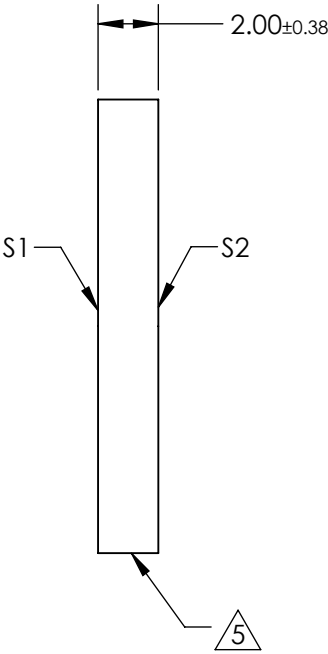
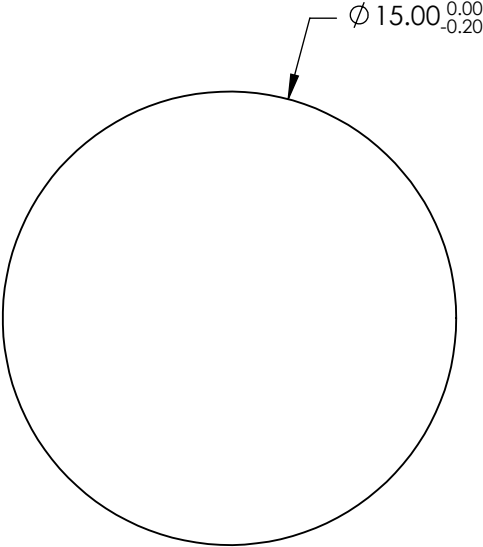


- NOTES:
- 1. SUBSTRATE: FUSED SILICA
 - 2. RoHS: COMPLIANT
 - 3. SURFACE S2 TO BE PARALLEL TO SURFACE S1 TO WITHIN <5 ARCMIN
 - 4. COATING (APPLY ACROSS CLEAR APERTURE)
S1 & S2: Ravg <0.5% @ 350 - 700nm

5. FINE GRIND SURFACE



**FOR INFORMATION ONLY:
DO NOT MANUFACTURE
PARTS TO THIS DRAWING**

SPECIFICATIONS SUBJECT TO CHANGE WITHOUT NOTICE
DIMENSIONS ARE FOR REFERENCE ONLY

	S1	S2
SHAPE	PLANO	PLANO
SURFACE ACCURACY	1λ	1λ
SURFACE QUALITY	60 - 40	60 - 40
CLEAR APERTURE	Ø 13.5	Ø 13.5
BEVEL	PROTECTED AS NEEDED	PROTECTED AS NEEDED

THIRD ANGLE
PROJECTION

ALL DIMS IN mm

 **Edmund Optics®**

TITLE	15mm Dia. 2mm Thick VIS-EXT Coated, 1λ Fused Silica Widow	
DWG NO	25191	SHEET 7 OF 52