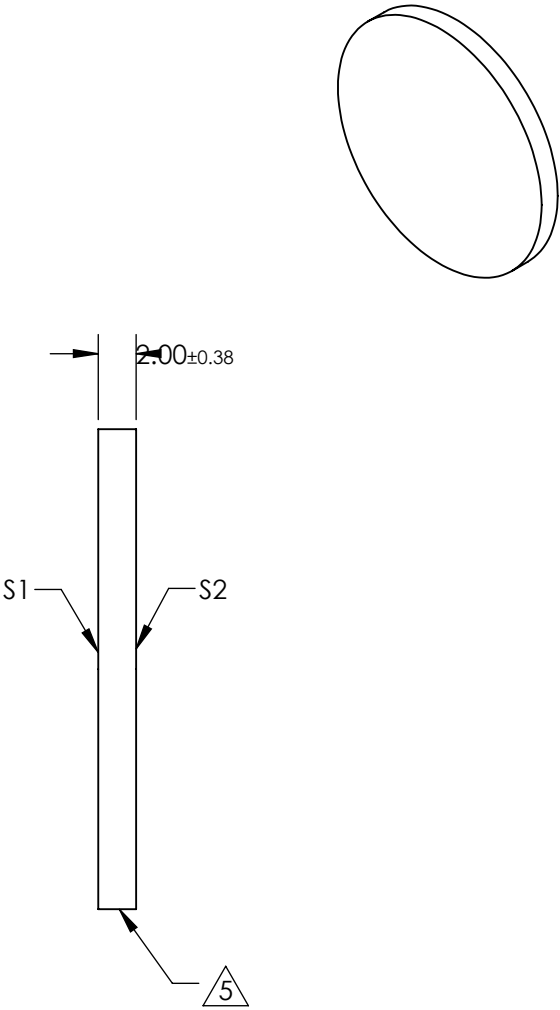
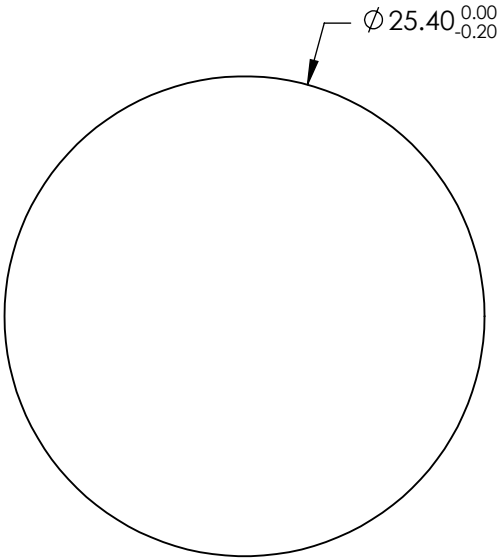


- NOTES:
- 1. SUBSTRATE: FUSED SILICA
  - 2. RoHS: COMPLIANT
  - 3. SURFACE S2 TO BE PARALLEL TO SURFACE S1 TO WITHIN <5 ARCMIN
  - 4. COATING (APPLY ACROSS CLEAR APERTURE)
    - S1 & S2: Rabs <0.25% @ 532nm
    - Rabs <0.25% @ 1064nm
    - Ravg <1.0% @ 500 - 1100nm

5. FINE GRIND SURFACE



**FOR INFORMATION ONLY:  
DO NOT MANUFACTURE  
PARTS TO THIS DRAWING**

SPECIFICATIONS SUBJECT TO CHANGE WITHOUT NOTICE  
DIMENSIONS ARE FOR REFERENCE ONLY

	S1	S2
SHAPE	PLANO	PLANO
SURFACE ACCURACY	1λ	1λ
SURFACE QUALITY	60 - 40	60 - 40
CLEAR APERTURE	Ø 22.86	Ø 22.86
BEVEL	PROTECTED AS NEEDED	PROTECTED AS NEEDED

THIRD ANGLE  
PROJECTION

ALL DIMS IN      mm

 **Edmund Optics®**

TITLE	25.4mm Dia. 2mm Thick YAG-BBAR Coated, 1λ Fused Silica Widow	
DWG NO	25229	SHEET 41 OF 52