

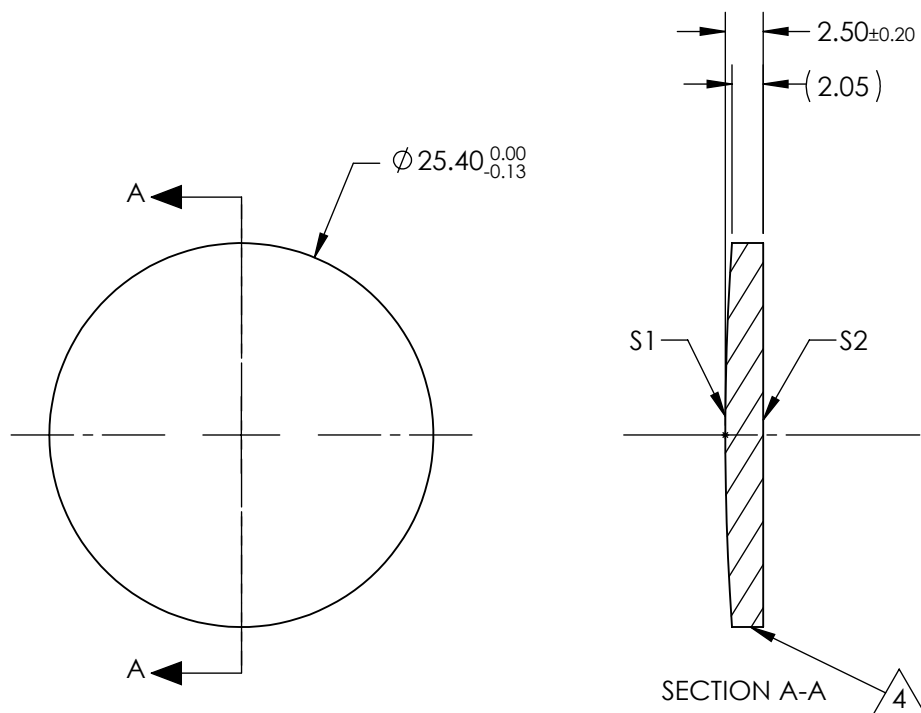
NOTES:

1. SUBSTRATE:
Zinc Selenide (ZnSe), CVD Grade
2. CENTERING TOLERANCE:
<3 ARCMIN
3. COATING (APPLY ACROSS CLEAR APERTURE)
S1 & S2: R(AVG) <0.5% @ 8 - 12 μ m
R(ABS) <1% @ 8 - 12 μ m

4. FINE GRIND SURFACE

5. FOCAL LENGTH TOLERANCE: $\pm 2\%$

6. ROHS COMPLIANT



**FOR INFORMATION ONLY:
DO NOT MANUFACTURE
PARTS TO THIS DRAWING**

SPECIFICATIONS SUBJECT TO CHANGE WITHOUT NOTICE
DIMENSIONS ARE FOR REFERENCE ONLY

			EFL @ 10.6μm		127.0		DIMENSIONS ARE FOR REFERENCE ONLY	
SHAPE	S1	S2	BFL @ 10.6μm		127.35		Edmund Optics®	
RADIUS	CONVEX	PLANO						
IRREGULARITY AT 10.6μm	180.3	INFINITY						
SURFACE QUALITY	λ/20	λ/20						
CLEAR APERTURE	60-40	60-40						
BEVEL	ø22.86	ø22.86						
	PROTECTED AS NEEDED	PROTECTED AS NEEDED						
			THIRD ANGLE PROJECTION		TITLE		25.4mm Dia. x 127mm FL, 8-12μm AR Coated, ISP Optics ZnSe Plano-Convex Lens	
			ALL DIMS IN mm		DWG NO		24988	
							SHEET 1 OF 1	