

NOTES:

1. SUBSTRATE:

Crystalline Quartz

2. COATING (APPLY ACROSS COATING APERTURE):

S1 & S2: R(AVG) <0.3%

DAMAGE THRESHOLD,

PULSED: >20 J/cm², 10ns @ 10Hz @ 1064nm

3. SURFACE S1 TO BE PARALLEL TO SURFACE S2 TO WITHIN <3 ARCSEC

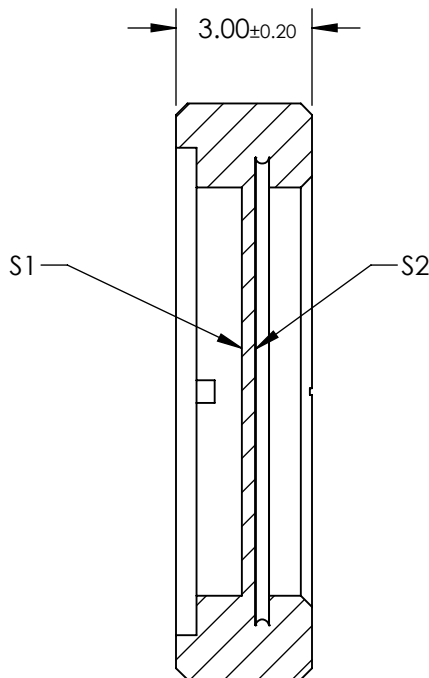
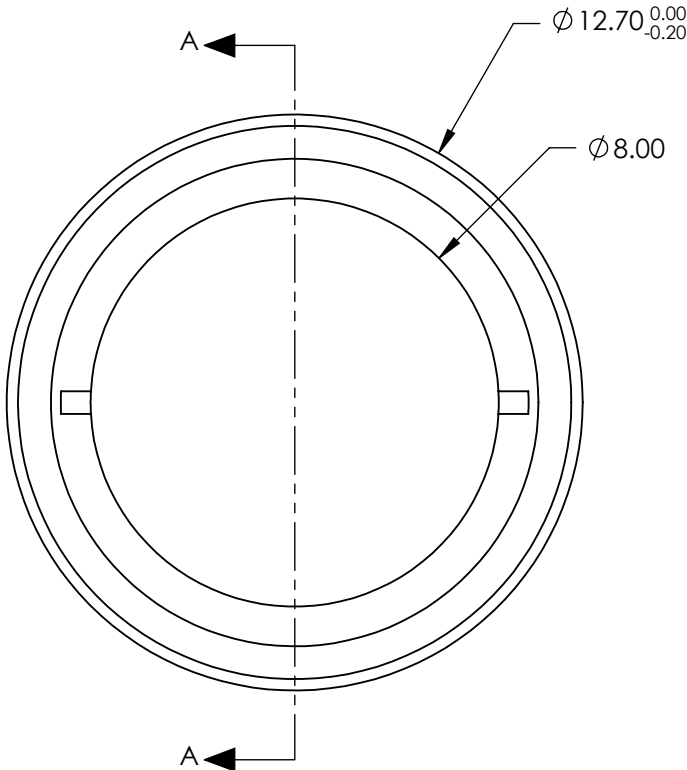
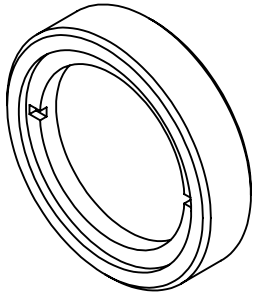
4. RETARDANCE: $\lambda/4 \pm \lambda/300$ @ 20°C

RETARDANCE ORDER: 1

5. DESIGN WAVELENGTH: 1064nm

6. TRANSMITTED WAVEFRONT: < $\lambda/10$ @ 632.8nm

7. ROHS: COMPLIANT

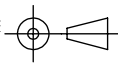



SECTION A-A

**FOR INFORMATION ONLY:
DO NOT MANUFACTURE
PARTS TO THIS DRAWING**

SPECIFICATIONS SUBJECT TO CHANGE WITHOUT NOTICE
DIMENSIONS ARE FOR REFERENCE ONLY

	S1	S2
SURFACE QUALITY	20-10	20-10
CLEAR APERTURE	Ø 8.00	Ø 8.00

THIRD ANGLE PROJECTION 	
ALL DIMS IN	mm

 Edmund Optics®			
TITLE		12.7mm Dia., 1064nm, $\lambda/4$ High Energy Waveplate	
DWG NO		25454	SHEET 8 OF 8