

NOTES:

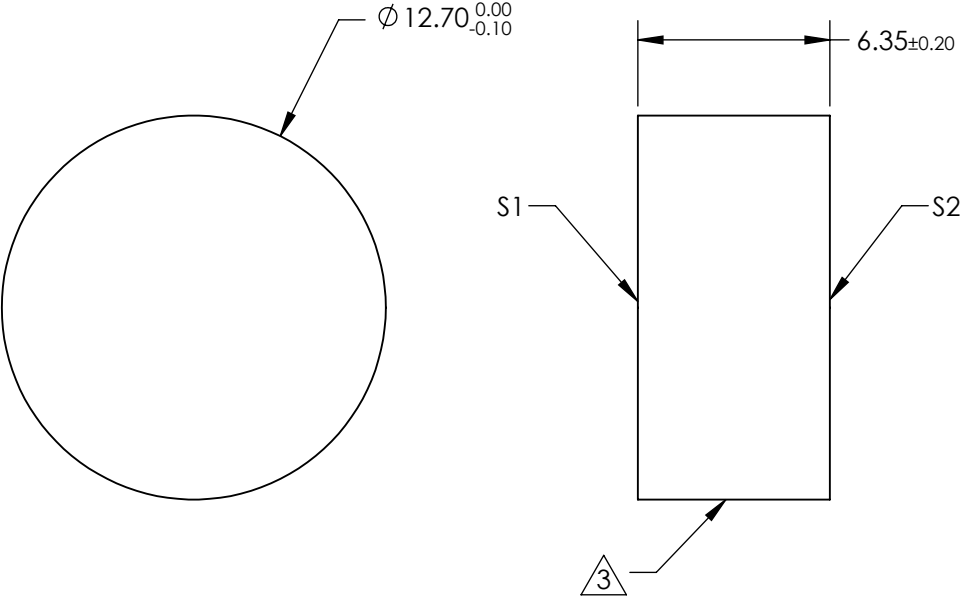
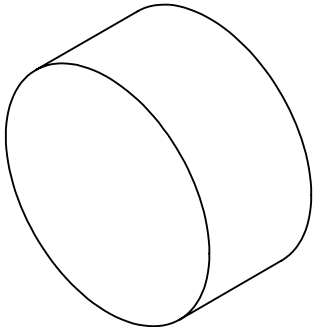
1. SUBSTRATE:  
FUSED SILICA
2. COATING (APPLY ACROSS CLEAR APERTURE)  
S1: Ultrafast (1010-1110nm)  
R(AVG) S&P > 99.90% @ 1060nm  
R(AVG) > 99.7% @ 1010 – 1110nm

GDD SPECIFICATION:  $\pm 20 \text{ fs}^2$ @ 1010 - 1100nm @ 45° AOI

S2: NONE

3. FINE GRIND SURFACE


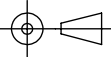
4. ROHS COMPLIANT



**FOR INFORMATION ONLY:  
DO NOT MANUFACTURE  
PARTS TO THIS DRAWING**

SPECIFICATIONS SUBJECT TO CHANGE WITHOUT NOTICE  
DIMENSIONS ARE FOR REFERENCE ONLY

	S1	S2
SHAPE	PLANO	PLANO
SURFACE QUALITY	10 - 5	COMMERCIAL POLISH
CLEAR APERTURE	Ø 11.43	N/A
SURFACE FLATNESS	λ/8	N/A
BEVEL	PROTECTED AS NEEDED	PROTECTED AS NEEDED

 Edmund Optics®			
THIRD ANGLE PROJECTION 		TITLE	Low-GDD Ultrafast Dielectric Mirror, 1060nm, 45° AOI, 12.7mm Dia., 6.35mm Thick
ALL DIMS IN	mm	DWG NO	26838
			SHEET 16 OF 24