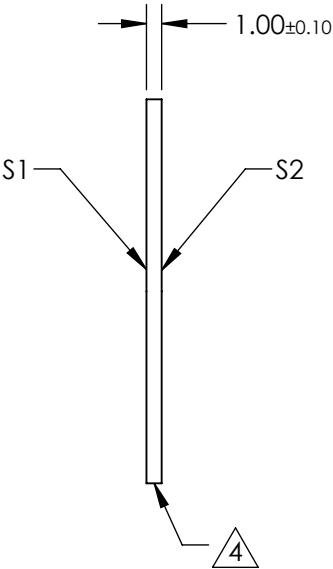
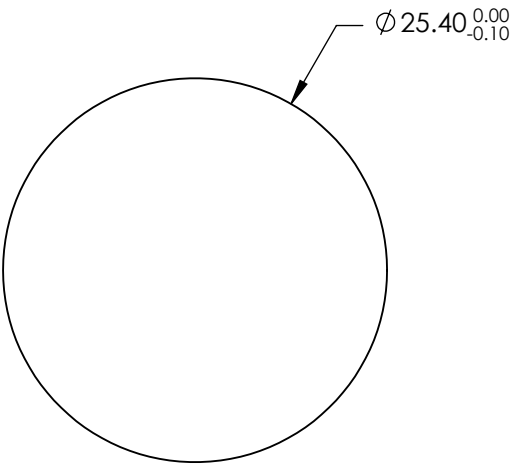
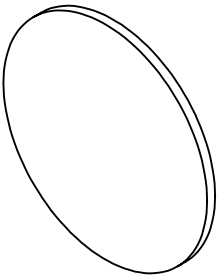


- NOTES:
- 1. SUBSTRATE: FUSED SILICA
  - 2. SURFACE S2 TO BE PARALLEL TO SURFACE S1 TO WITHIN <0.5 ARCMIN
  - 3. COATING (APPLY ACROSS CLEAR APERTURE)
    - S1: Laser V-Coat (355nm)
    - Rabs <0.25% @ 355nm @ 0 ±5° AOI
- DAMAGE THRESHOLD,  
PULSED: 7.5 J/cm2 @ 355nm, 20ns, 20Hz
- S2: NONE

4. FINE GRIND SURFACE

5. ROHS COMPLIANT



**FOR INFORMATION ONLY:  
DO NOT MANUFACTURE  
PARTS TO THIS DRAWING**

SPECIFICATIONS SUBJECT TO CHANGE WITHOUT NOTICE  
DIMENSIONS ARE FOR REFERENCE ONLY

	S1	S2
SHAPE	PLANO	PLANO
SURFACE QUALITY	20 - 10	20 - 10
CLEAR APERTURE	90%	90%
BEVEL	PROTECTED AS NEEDED	PROTECTED AS NEEDED

THIRD ANGLE  
PROJECTION

ALL DIMS IN      mm

**EO**® **Edmund Optics®**

TITLE	25.4mm Dia., 1mm Thick, 355nm, Nd:YAG Laser Line Beam Sampler		
DWG NO	29019	SHEET 6 OF 8	