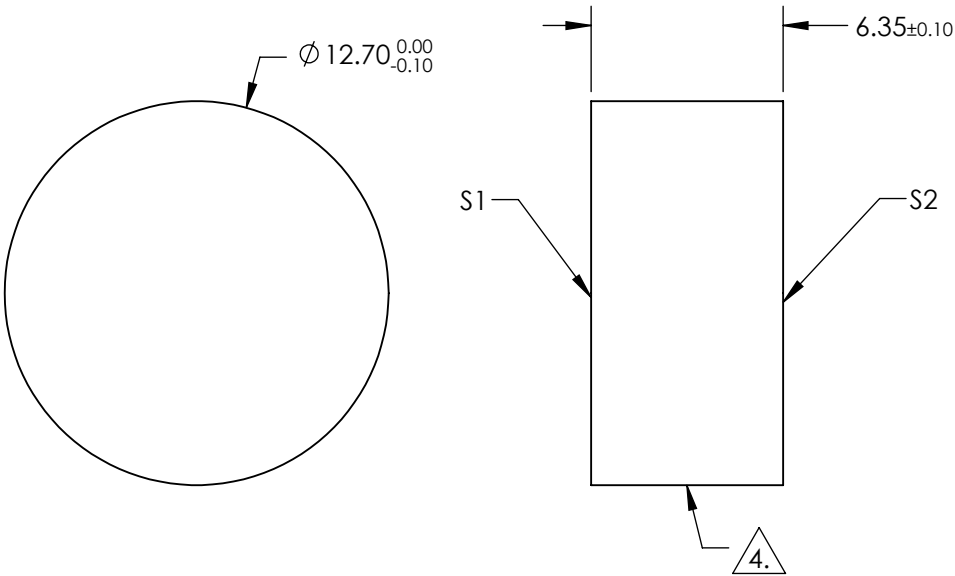
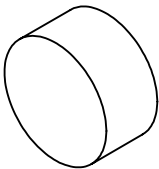



NOTES:

- 1. SUBSTRATE:
FUSED SILICA
- 2. SURFACE S2 TO BE PARALLEL TO SURFACE S1 TO WITHIN <3 ARCmin
- 3. COATING (APPLY ACROSS CLEAR APERTURE)
S1: R(abs) S & P > 99.80% @ 400nm @ 0-45° AOI
- S2: NONE
- 4. FINE GRIND SURFACE
- 5. POWER, IRREGULARITY, AND SURFACE QUALITY SPECIFICATIONS APPLY
ACROSS CLEAR APERTURE
- 6. CLEAR APERTURE AND COATING APERTURE ARE CENTERED ON SURFACES



**FOR INFORMATION ONLY:
DO NOT MANUFACTURE
PARTS TO THIS DRAWING**

SPECIFICATIONS SUBJECT TO CHANGE WITHOUT NOTICE
DIMENSIONS ARE FOR REFERENCE ONLY

	S1	S2	<div><div><div><div><div></div><div></div></div></div><div><div></div><div></div></div></div><div>Edmund Optics®</div><div>TITLE</div><div>DWG NO</div><div>SHEET</div></div>			
SHAPE	PLANO	PLANO				
SURFACE QUALITY	10 - 5	COMMERCIAL POLISH	<div>THIRD ANGLE PROJECTION</div> 	<div>12.7mm Dia., 6.35mm Thick, Fused Silica 400nm Ti:Sapphire Mirror, 0-45 Deg AOI</div>		
SURFACE FLATNESS	λ/10	N/A				
CLEAR APERTURE	Ø 11.43	N/A				
COATING APERTURE	Ø 11.43	N/A				
BEVEL	PROTECTED AS NEEDED	PROTECTED AS NEEDED				
			ALL DIMS IN	mm		