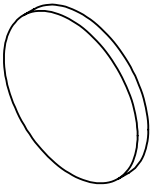
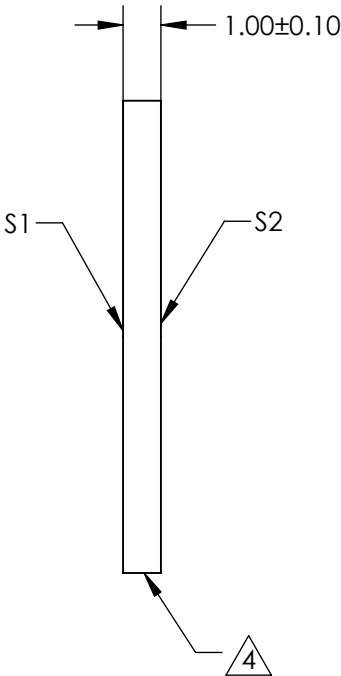
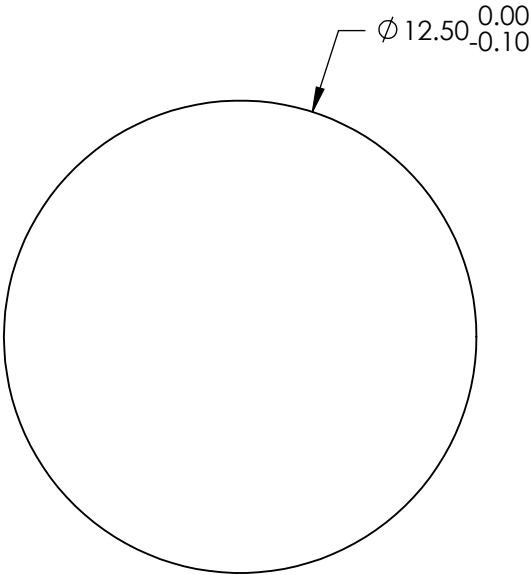


- NOTES:
- 1. SUBSTRATE:
FUSED SILICA (CORNING 7980)
 - 2. S1 TO BE PARALLEL WITH S2 TO WITHIN <1 ARCMIN
 - 3. COATING (APPLY ACROSS CLEAR APERTURE)
S1 & S2: NIR I (600-1050nm)
R(AVG) ≤0.5% @ 600 - 1050nm



4. FINE GRIND SURFACE

5. ROHS COMPLIANT



FOR INFORMATION ONLY:
DO NOT MANUFACTURE
PARTS TO THIS DRAWING

SPECIFICATIONS SUBJECT TO CHANGE WITHOUT NOTICE
DIMENSIONS ARE FOR REFERENCE ONLY

	S1	S2
SHAPE	PLANO	PLANO
SURFACE QUALITY	40 - 20	40 - 20
CLEAR APERTURE	Ø 11.25	Ø 11.25
BEVEL	PROTECTED AS NEEDED	PROTECTED AS NEEDED



ALL DIMS IN mm

Edmund Optics®

TITLE 12.5mm Dia., 1mm Thick, NIR I Coated, λ/4
Fused Silica Window

DWG NO 72344

SHEET
10 OF 84