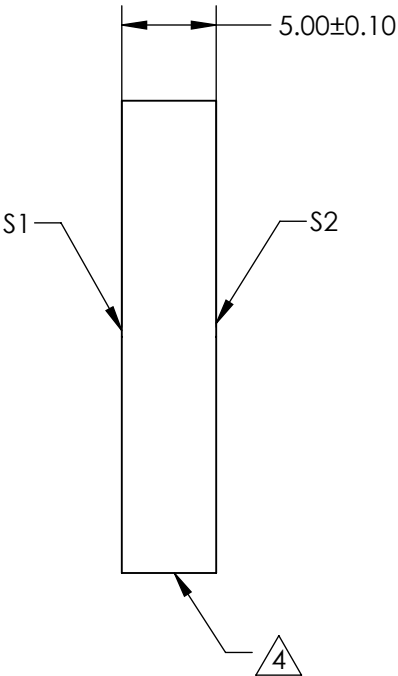
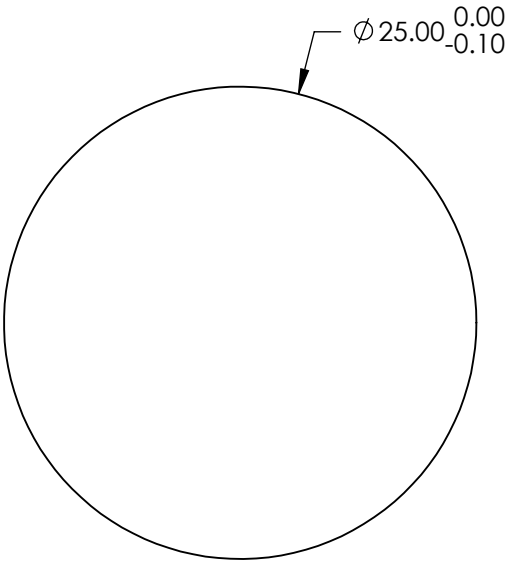
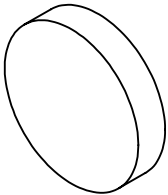



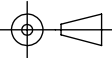
NOTES:

- 1. SUBSTRATE:  
FUSED SILICA (CORNING 7980)
- 2. S1 TO BE PARALLEL WITH S2 TO WITHIN <1 ARCMIN
- 3. COATING (APPLY ACROSS CLEAR APERTURE)  
S1 & S2: NIR II (750-1550nm)  
R(ABS) ≤1.5% @ 750 - 800nm  
R(ABS) ≤1.0% @ 800 - 1550nm  
R(AVG) ≤0.7% @ 750 - 1550nm
- 4. FINE GRIND SURFACE
- 5. ROHS COMPLIANT



**FOR INFORMATION ONLY:  
DO NOT MANUFACTURE  
PARTS TO THIS DRAWING**

SPECIFICATIONS SUBJECT TO CHANGE WITHOUT NOTICE  
DIMENSIONS ARE FOR REFERENCE ONLY

	S1	S2	 Edmund Optics®			
SHAPE	PLANO	PLANO		TITLE	25mm Dia., 5mm Thick, NIR II Coated, λ/4 Fused Silica Window	
SURFACE QUALITY	40 - 20	40 - 20		DWG NO	72369	SHEET 35 OF 84
CLEAR APERTURE	Ø 22.50	Ø 22.50				
BEVEL	PROTECTED AS NEEDED	PROTECTED AS NEEDED	ALL DIMS IN mm			