

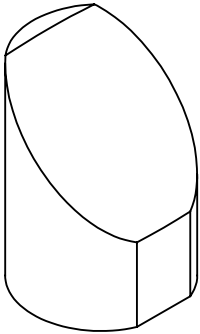
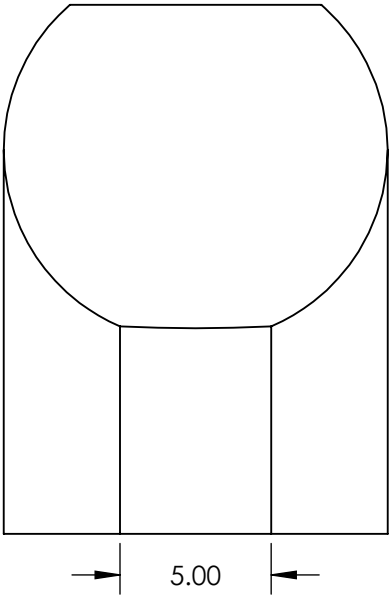
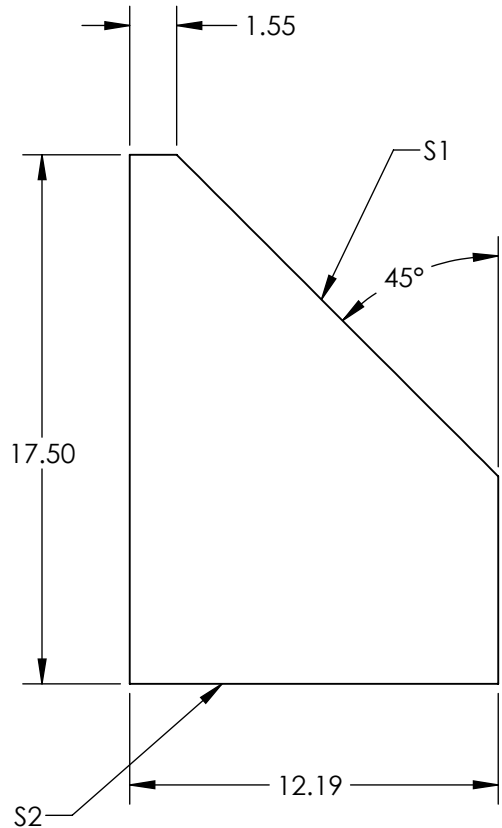
NOTES:

- 1. SUBSTRATE:
UV FUSED SILICA
- 2. COATING (APPLY ACROSS CLEAR APERTURE)

S1: VIS COATED (400 - 750NM)
R(AVG) > 98% FROM 400-750nm @ 0°-45° AOI FOR ALL POLARIZATIONS

S2: NONE

SURFACE ROUGHNESS: <10 Å RMS
- 3. FOCAL LENGTH TOLERANCE: ±1%
- 4. ROHS COMPLIANT

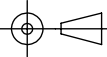


**FOR INFORMATION ONLY:
DO NOT MANUFACTURE
PARTS TO THIS DRAWING**

SPECIFICATIONS SUBJECT TO CHANGE WITHOUT NOTICE
DIMENSIONS ARE FOR REFERENCE ONLY

	S1
SHAPE	PARABOLIC
SURFACE FIGURE AT 632.8nm (RMS)	$\lambda/8$
CLEAR APERTURE	90%
BEVEL	PROTECTED AS NEEDED

THIRD ANGLE
PROJECTION



ALL DIMS IN

mm



Edmund Optics®

TITLE

12.7 x 50.8mm EFL 90° VIS Coated Glass
Off-Axis Parabolic Mirror

DWG NO

18670

SHEET
1 OF 1