

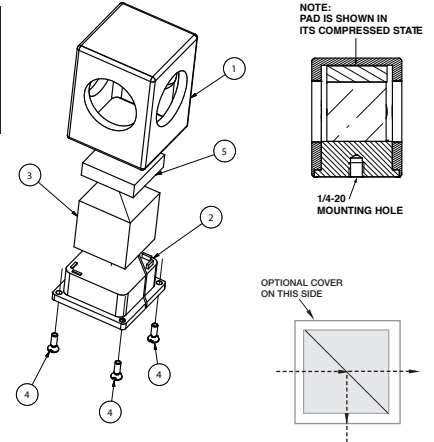
For Stock Nos. 56-263, 56-264, 56-265

For Technical Service,  
Call 1-800-363-1992

**C-MOUNT OPTICAL COMPONENT HOLDERS**

PARTS LIST		
ITEM	QTY	PART DESCRIPTION
1	1	Housing
2	1	Base
3	1	25mm Cube Beamsplitter (sold separately)
4	4	M2.5x0.45mm Buttonhead Cap Screw
5	1	Rubber Pad
6	1	C-Mount Aperture Cover
7	2	M1.5 Allen Wrench

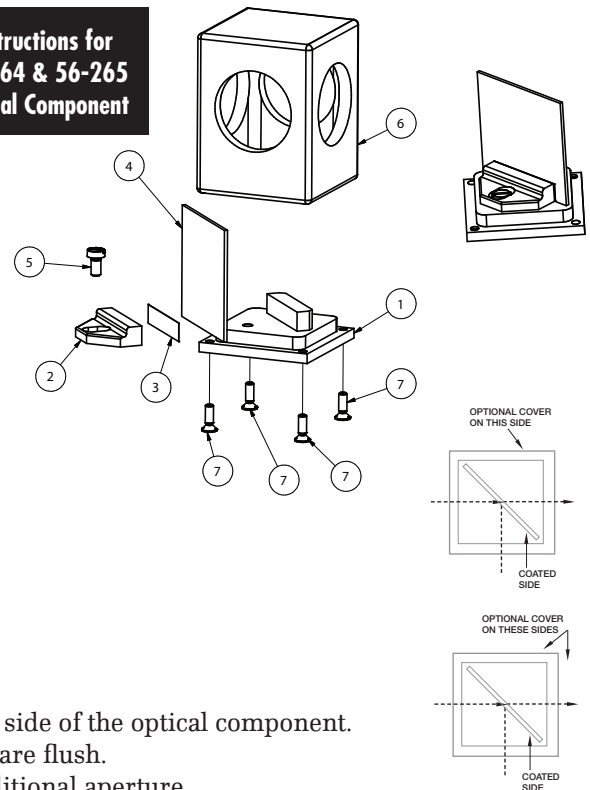
**Instructions for  
56-263 Cube  
Beamsplitter Mount**



1. Clean cube beamsplitter and metal parts if necessary.
2. Place cube beamsplitter onto base, fitting the cube in between raised guides.
3. Place rubber shim on top of the cube beamsplitter. Due to variance in rubber thickness, first check fit in assembly to avoid damaging the optic. Then remove backing and attach to optic.
4. Place housing over base. Secure with 4 flathead screws so that edges are flush.
5. Use the aperture cover to protect the unused port of the housing. Additional aperture covers can be ordered under stock number 55-245.

PARTS LIST		
ITEM	QTY	PART DESCRIPTION
1	1	Base
2	1	Clamp
3	1	Rubber Pad
4	1	35mm sq. x 1mm (56-264) or 3mm (56-265) Optical Component (sold separately)
5	1	M3x0.5x6mm SHCS (and Split Lock Washer)
6	1	Housing
7	4	M2 5x0.45x6mm Buttonhead Cap Screw
8	1	C-Mount Aperture Cover
9	2	M1.5 Allen Wrench
10	2	M2.5 Allen Wrench

**Instructions for  
56-264 & 56-265  
Optical Component**



1. Clean optical component and metal parts if necessary.
2. Place optical component onto base.
3. Install rubber shim into inside surface of clamp.
4. Using SHCS, screw clamp into place with rubber shim against coated side of the optical component.
5. Place housing over base. Secure with 4 flathead screws so that edges are flush.
6. Use the aperture cover to protect the unused port of the housing. Additional aperture covers can be ordered under stock number 55-245.